

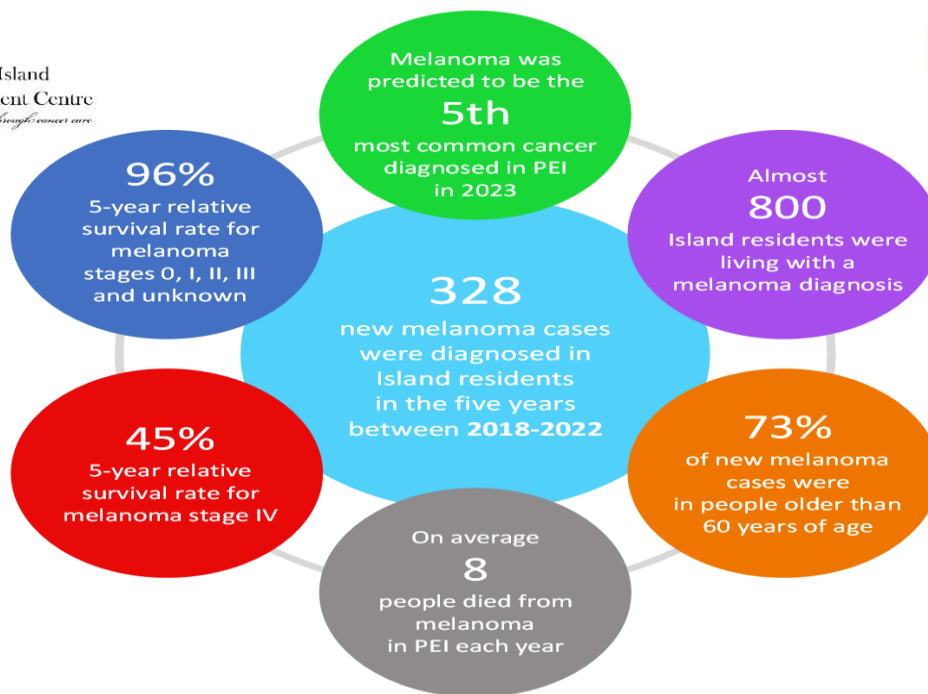
Melanoma Skin Cancer Trends in Prince Edward Island

Data from PEI Cancer Registry for January 1, 2018 to December 31, 2022

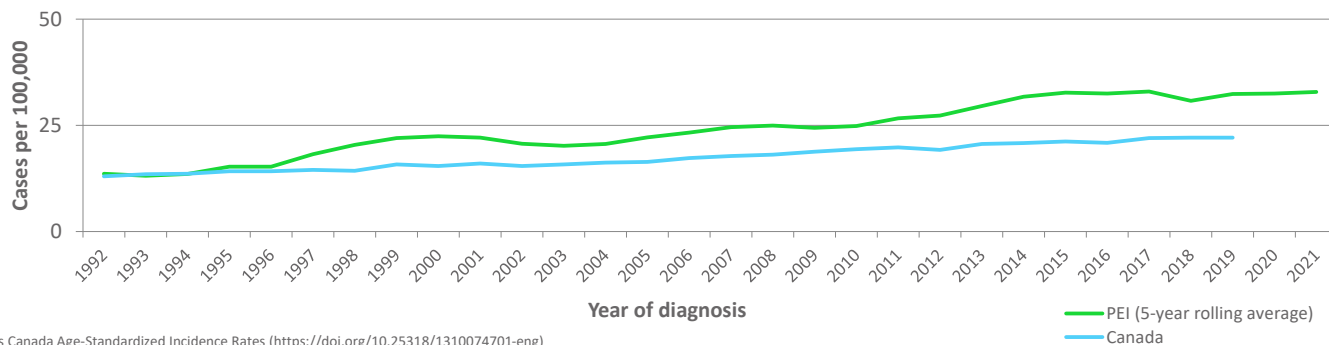


Prince Edward Island
Cancer Treatment Centre
Guiding your journey through cancer care

Health PEI
One Island Health System

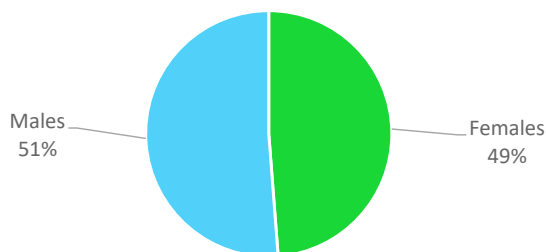


Rate of New Melanoma Skin Cancer Cases Over Time, PEI and Canada

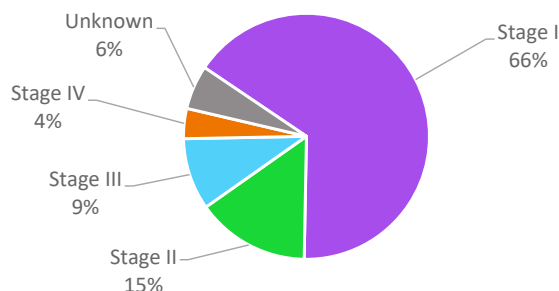


Statistics Canada Age-Standardized Incidence Rates (<https://doi.org/10.25318/1310074701-eng>)

Melanoma Cancer Cases by Sex



Melanoma Cancer Cases by Stage



Key Points and Recommendations

- ✓ Melanoma skin cancer rates in PEI have increased over time and been higher than Canadian rates
 - ✓ When melanoma was diagnosed at an early stage, prognosis was excellent
- ✓ The greatest risk factor for melanoma is exposure to ultraviolet (UV) rays. Help lower your risk by avoiding tanning equipment and protecting your skin when UV index is 3 or higher: seek shade, cover up with clothing and a hat, and use protective sunscreen
- ✓ Examine all your skin on a regular basis and consult with a health care provider if you notice: a mole you already have changing in shape, color, size, or texture; a new mole appears; or an usual mole that doesn't look like others that you have