

GREENHOUSE GAS (GHG) EMISSIONS: 2020

Environment and Climate Change Canada generates PEI's GHG information. They are always trying to improve the completeness, consistency, and accuracy of this information, so numbers can change year to year. Emissions data for 2020 is the most recent information available. All information is Mt of CO₂ eq unless otherwise noted.

1 Mt (megatonne) = 1,000 kt (kilotonne) = 1,000,000 t (tonne)

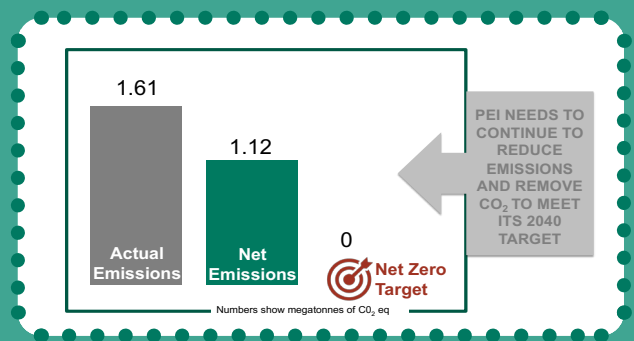


2020 GHG Emissions in PEI were **1.610 Mt**, down **3.1%** over the previous year (51,000 tonnes).

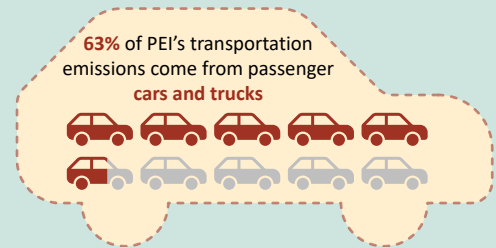
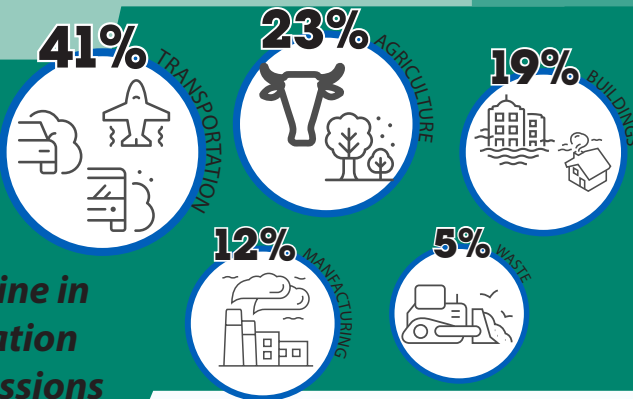
PEI reduced its GHG emissions by **15%** from 2005 to 2020 while the economy grew **by 26%** and population grew **by 17%**.



in 2020, PEI's net emissions were **1.12 Mt**



There has been growth in manufacturing emissions and a **slight decline in transportation sector emissions**



On The Path to **Net Zero**

PrinceEdwardIsland.ca/NetZero

PRINCE EDWARD ISLAND'S

GREENHOUSE GAS (GHG) EMISSIONS: 2020

Environment and Climate Change Canada generates PEI's GHG information. They are always trying to improve the completeness, consistency, and accuracy of this information, so numbers can change year to year. Emissions data for 2020 is the most recent information available. All information is Mt of CO₂ eq unless otherwise noted.

1 Mt (megatonne) = 1,000 kt (kilotonne) = 1,000,000 t (tonne)

Building emissions are decreasing

25%*
2005



19%*
2020

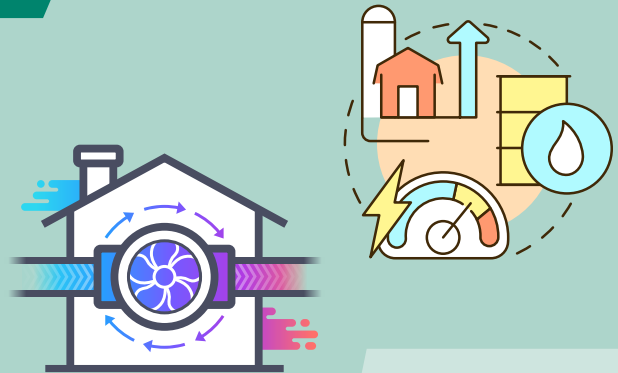


*share of total emissions



PEI has a variety of energy efficiency programs that have *reduced energy use* and have encouraged electrification of heating sources.

47% of our emissions come from households, while **53%** come from industries. Last year, it was **50%** attributed to both.



Statistics Canada. Table 38-10-0097-01 Physical flow account for greenhouse gas emissions



88% of emissions in the agriculture sector come from crop and animal production

only **12%** comes from on-farm fuel use

On The Path to
Net Zero

PrinceEdwardIsland.ca/NetZero

